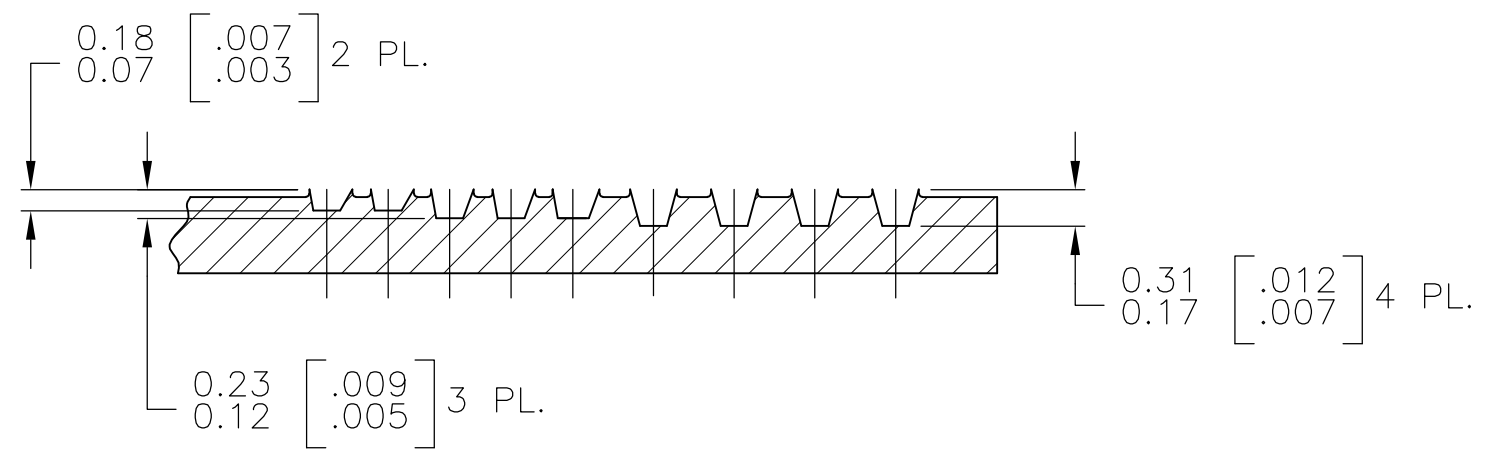
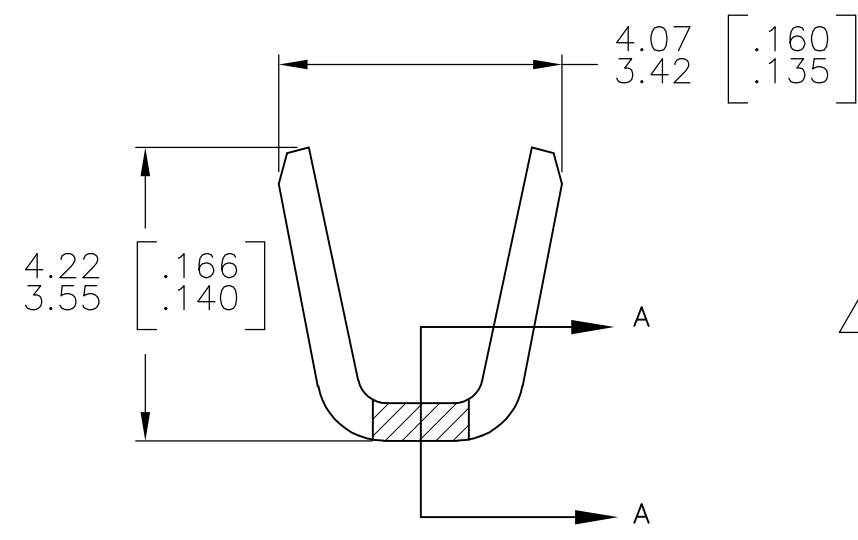
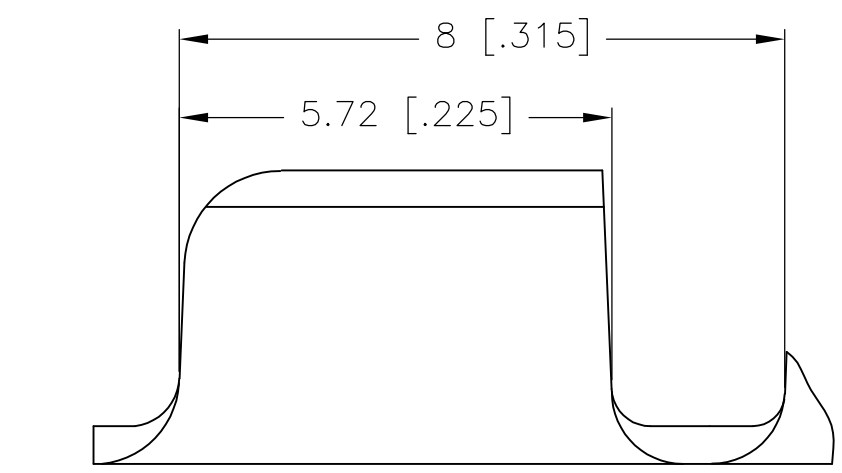
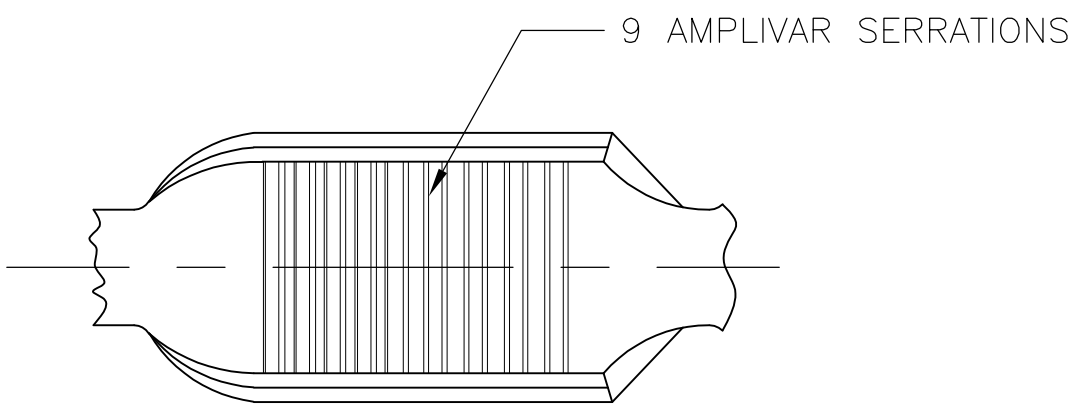


THIS DRAWING IS UNPUBLISHED. RELEASED FOR PUBLICATION
 © COPYRIGHT - By - ALL RIGHTS RESERVED.

LOC	DIST	REVISIONS			
P	LTR	DESCRIPTION	DATE	DWN	APVD
AF	50	E7	REVISE PER ECR-14-005944	23APR2014	GRZ JL



SECTION A-A
 SCALE : 20:1

METRIC

- 1 PRODUCT PROVIDED IN STRIP FORM ON REELS; BREAKS MAY BE PRESENT.
- 2 DIMENSIONS IN BRACKETS ARE IN INCHES.
- ⓔ6 3 CRIMP WIDTH: .110 F (AMPLIVAR TYPE)
 CRIMP HEIGHT (±.002)=(TOTAL CMA +10,700)/193,400

 CRIMP WIDTH: .140 F (AMPLIVAR TYPE)
 CRIMP HEIGHT (±.002)=(TOTAL CMA +11,100)/233,300
- △ 4 GENERAL APPLICATION GUIDELINES MUST BE FOLLOWED AS SPECIFIED IN CATALOG # 82221
 FOR APPLICATOR INFORMATION CALL: 1-800-722-1111
 FOR PRODUCT INFORMATION CALL: 1-800-522-6752

 NOT FOR USE WITH ALUMINUM MAGNET WIRE,
 USE WITH COPPER MAGNET WIRE ONLY

TIN	62306-2
NONE	△ 4 62306-1
FINISH	Part No.

THIS DRAWING IS A CONTROLLED DOCUMENT.		DWN RAGHAVENDRA 31JAN06	STE TE Connectivity	
DIMENSIONS: mm [INCHES]		CHK G.D.PORTA		
TOLERANCES UNLESS OTHERWISE SPECIFIED:		APVD G.D.PORTA	NAME SPLICE, AMPLIVAR 1500-5000 CMA	
0 PLC ± -		PRODUCT SPEC -	APPLICATION SPEC	
1 PLC ± -		114-2003	SIZE A3	CAGE CODE 00779
2 PLC ± 0.38[.015]		WEIGHT -	DRAWING NO C-62306	RESTRICTED TO -
3 PLC ± -		CUSTOMER DRAWING	SCALE 10:1	SHEET 1 OF 1
4 PLC ± -		MATERIAL REF 0.51±0.03 [.020±.001] BRASS	REV E7	
ANGLES ± 1°		FINISH TIN PL.		